



HUGHES PLAZA WEST

10100 West Charleston Boulevard

Suites 200 & 230

Las Vegas, Nevada 89135



SPACE AVAILABLE

Suite 200: 6,544 sq. ft. (+/-)
Suite 230: 4,286 sq. ft. (+/-)

STARTING AT \$3.00/SQ. FT., PER MONTH
FULL SERVICE GROSS RENT

QUICK LOOK

Parcel number: 137-36-811-018
Building Sq. Ft.: 71,546 (+/-)
Land Sq. Ft.: 174,240 (+/-)
Land Acres: 4.000 (+/-)

Recently renovated.
Upscale lobby, Stone floor
Covered parking available.



DETAILS

A premium, upscale facility located at one of Summerlin's busiest intersections, Hughes Plaza West is a Class A office building with state of the art amenities. The building interior includes quality stone floors throughout; sleek woodwork; and an airy, upscale lobby with modern design details. Outside, the prestigious Hughes Plaza West boasts sophisticated architecture; lush, mature landscaping; ample, convenient parking; and covered parking options.

At 71,546 sq. ft. (+/-) with two stories, the building is home to established tenants that include Vintner Grill, House Advantage, Sierra Pacific, Synergy Sotheby's International Realty, Tiffany & Bosco P.A., Buckley Wealth Management, and Santoro Whitmire, among others.



FOR LEASING INFORMATION, PLEASE CONTACT

JEFF SUSA
702.363.4788 EXT. 277
EZME@COX.NET
LIC. # B.25367.LLC

DANIEL LOERA JR.
702.363.4788 EXT. 278
EZDL@HOTMAIL.COM
LIC. # S.176662

HUGHES PLAZA WEST

10100 West Charleston Boulevard
Las Vegas, Nevada 89135

The information contained herein has been carefully compiled from sources we consider reliable. We cannot guarantee the completeness or accuracy of the information. However, we believe the information to be correct as of the date of publication.



SUITE 200



SUITE 200

SUITE 200

Suite 200 is financial company space in a prime 2nd floor location directly off lobby/elevator with exceptional visibility.

Great reception, beautiful conference room with mountain views, nice mix of private offices and bullpen space. Large breakroom, good storage and corner space with great windows!

SUITE 230

A former national architecture firm's personal suite, Suite 230—with 4,286 RSF space—has great impact! The suite features a gorgeous reception with adjacent large conference room, open bullpen-style work areas with high-end finishes all around, good storage, an upgraded breakroom, and a fun and creative space overall. Some furniture is also available. This space is ready for a quick move-in.



SUITE 230



SUITE 230



FOR LEASING INFORMATION, PLEASE CONTACT
JEFF SUSA 702.363.4788 EXT. 277 **DANIEL LOERA JR.** 702.363.4788 EXT. 278
EZME@COX.NET EZDL@HOTMAIL.COM
LIC. # B.23367.LLC LIC. # S.176662

HUGHES PLAZA WEST

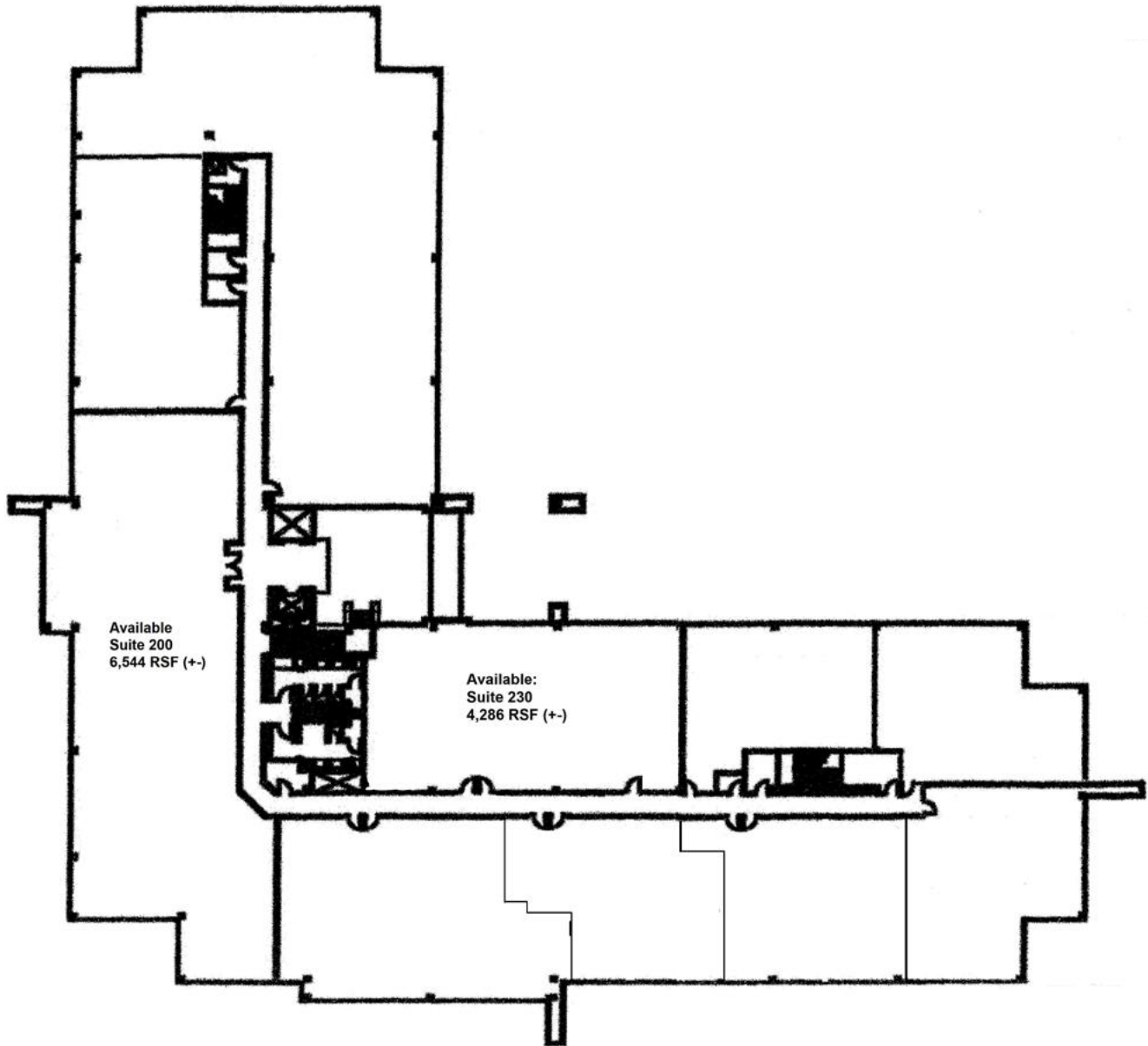
10100 West Charleston Boulevard
Las Vegas, Nevada 89135

The information contained herein has been carefully compiled from sources we consider reliable. We cannot guarantee the completeness or accuracy of the information. However, we believe the information to be correct as of the date of publication.

HUGHES PLAZA WEST

10100 W. CHARLESTON BLVD.
LAS VEGAS, NV 89135

Second Floor



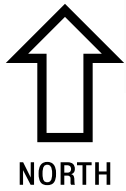
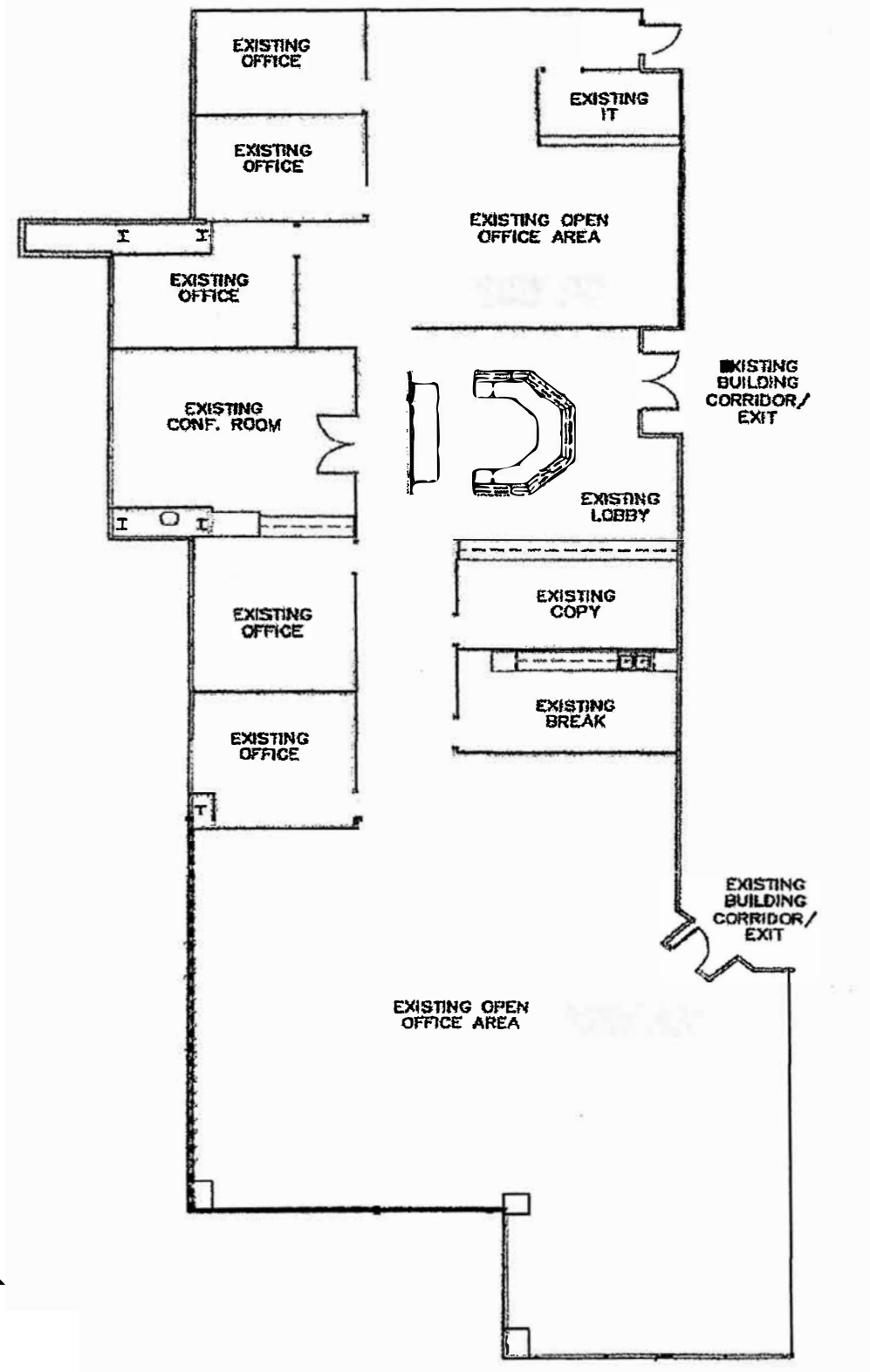
NORTH

REVISED 4.21.2022

HUGHES PLAZA WEST

10100 W. CHARLESTON BLVD.
LAS VEGAS, NV 89135

Suite 200 — 6,544 R.S.F.



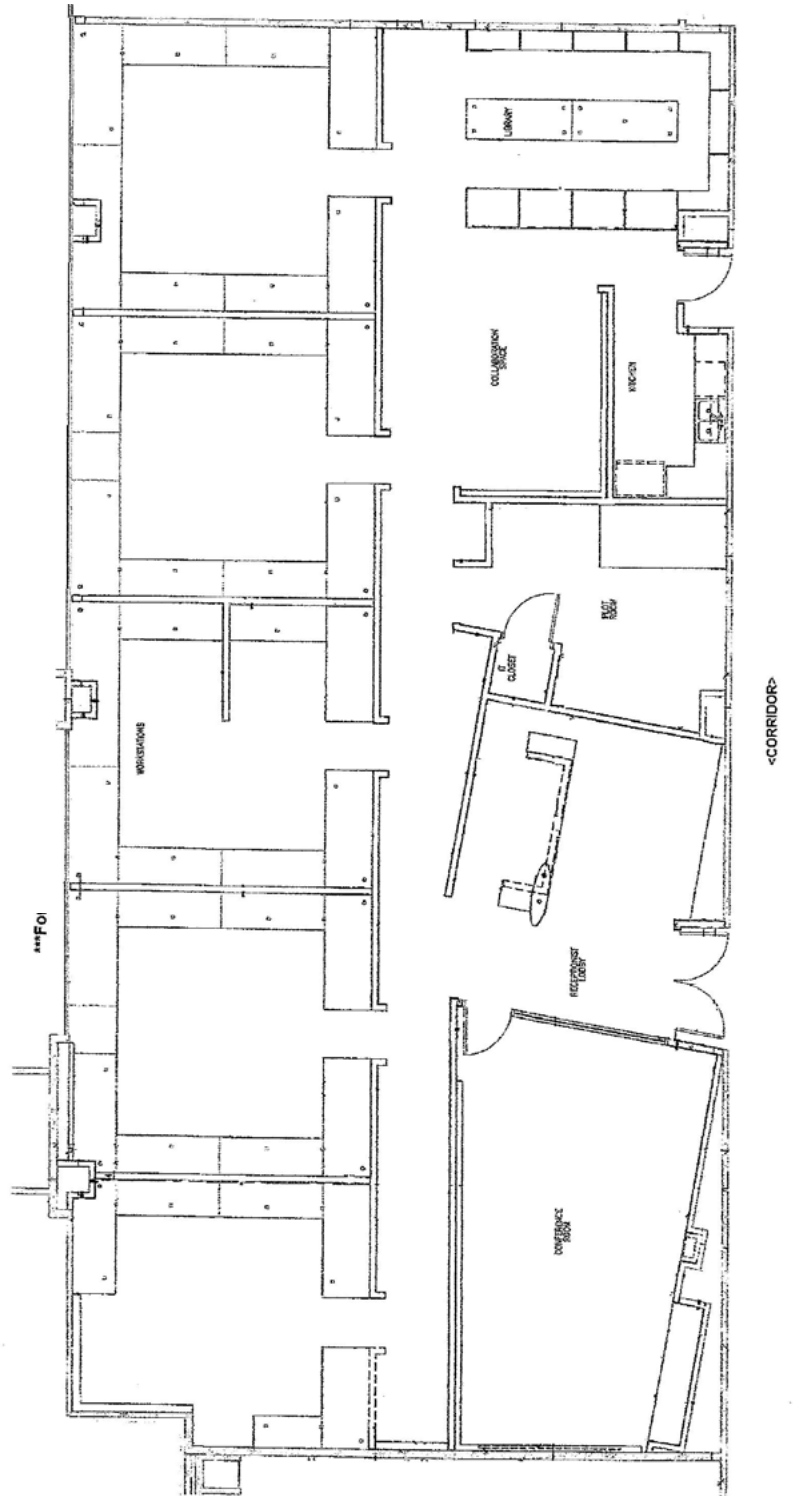
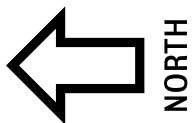
FOR REFERENCE ONLY — DO NOT SCALE

HUGHES PLAZA WEST

RAMGROUPLV.COM

10100 W. CHARLESTON BLVD.
LAS VEGAS, NV 89135

Suite 230 — 4,286 R.S.F.



FOR REFERENCE—DO NOT SCALE