



# HUGHES PLAZA WEST

10100 West Charleston Boulevard  
Las Vegas, Nevada 89135



## SPACE AVAILABLE

Suite 100: 2,965 sq. ft. (+/-)  
STARTING AT \$2.90/SQ. FT., PER MONTH — AVAILABLE 10/1/20

Suite 140: 3,922 sq. ft. (+/-)  
Suite 210: 4,091-6,299 sq. ft. (+/-) — AVAILABLE 9/15/20  
Suite 212: 2,208 sq. ft. (+/-) — AVAILABLE 9/15/20  
Suite 215: 2,098 sq. ft. (+/-)

STARTING AT \$2.85/SQ. FT., PER MONTH  
FULL SERVICE GROSS RENT

## QUICK LOOK

Parcel number: 137-36-811-018  
Building Sq. Ft.: 71,546 (+/-)  
Land Sq. Ft.: 174,240 (+/-)  
Land Acres: 4.000 (+/-)

Recently renovated.  
Upscale lobby, Stone floor  
Covered parking available.



## DETAILS

A premium, upscale facility located at one of Summerlin's busiest intersections, Hughes Plaza West is a Class A office building with state of the art amenities. The building interior includes quality stone floors throughout; sleek woodwork; and an airy, upscale lobby with modern design details. Outside, the prestigious Hughes Plaza West boasts sophisticated architecture; lush, mature landscaping; ample, convenient parking; and covered parking options.

At 71,546 sq. ft. (+/-) with two stories, the building is home to established tenants that include Vintner Grill, House Advantage, Sierra Pacific, Synergy Sotheby's International Realty, Tiffany & Bosco P.A., Buckley Wealth Management, Wesley Financial Group, and Santoro Whitmire, among others.



FOR LEASING INFORMATION, PLEASE CONTACT

**JEFF SUSA**  
702.363.4788  
EZME@COX.NET

**DANIEL LOERA JR.**  
702.363.4788  
EZDL@HOTMAIL.COM

## HUGHES PLAZA WEST

10100 West Charleston Boulevard  
Las Vegas, Nevada 89135

The information contained herein has been carefully compiled from sources we consider reliable. We cannot guarantee the completeness or accuracy of the information. However, we believe the information to be correct as of the date of publication.



FOR LEASING INFORMATION, PLEASE CONTACT  
**JEFF SUSA**  
702.363.4788  
EZME@COX.NET  
**DANIEL LOERA JR.**  
702.363.4788  
EZDL@HOTMAIL.COM

**HUGHES PLAZA WEST**  
10100 West Charleston Boulevard  
Las Vegas, Nevada 89135

The information contained herein has been carefully compiled from sources we consider reliable. We cannot guarantee the completeness or accuracy of the information. However, we believe the information to be correct as of the date of publication.



SUITE 210



SUITE 210



SUITE 212



SUITE 212



FOR LEASING INFORMATION, PLEASE CONTACT

**JEFF SUSA**  
702.363.4788  
EZME@COX.NET

**DANIEL LOERA JR.**  
702.363.4788  
EZDL@HOTMAIL.COM

# HUGHES PLAZA WEST

10100 West Charleston Boulevard  
Las Vegas, Nevada 89135

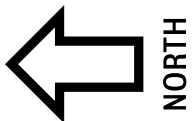
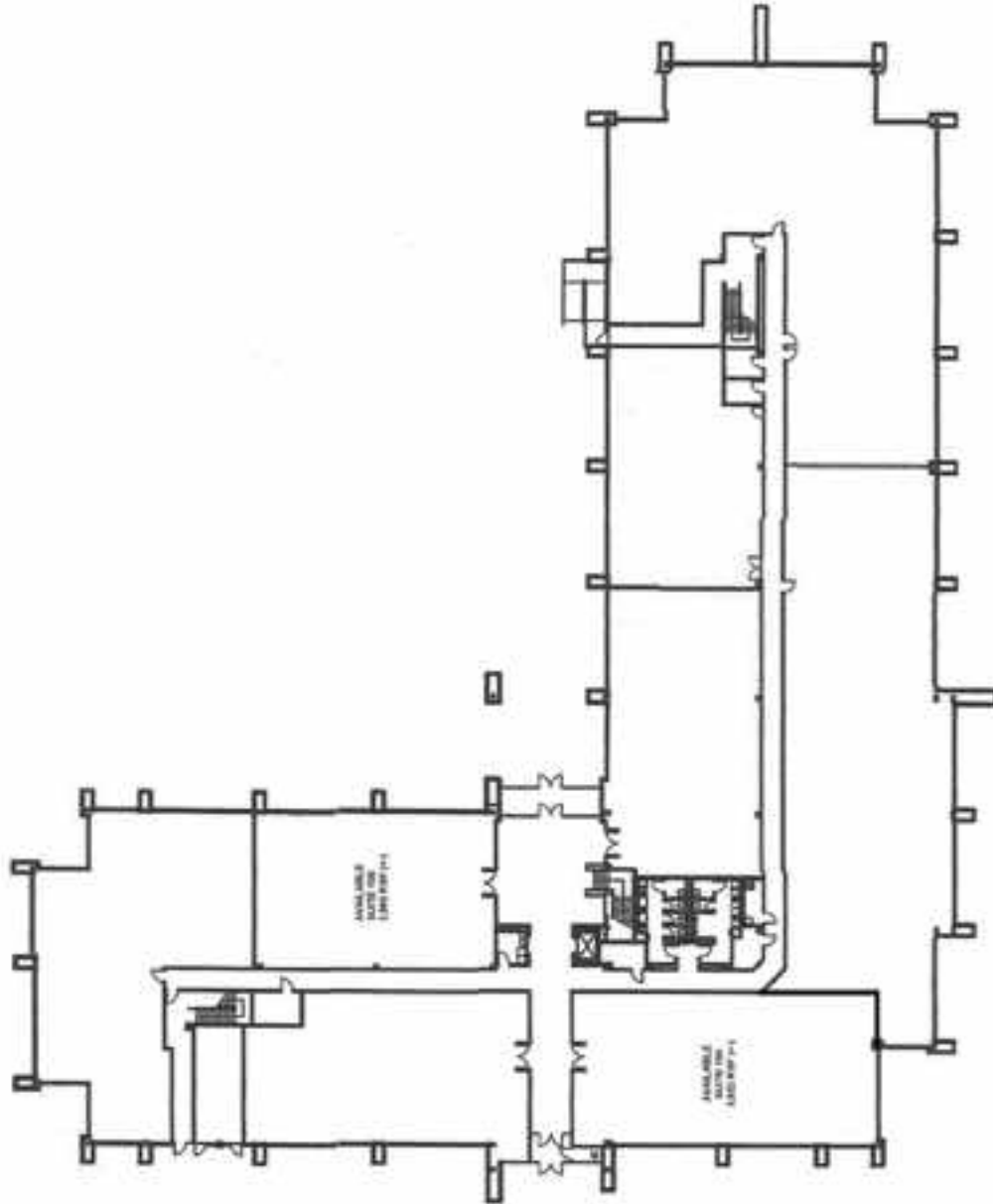
The information contained herein has been carefully compiled from sources we consider reliable. We cannot guarantee the completeness or accuracy of the information. However, we believe the information to be correct as of the date of publication.

# HUGHES PLAZA WEST

RAMGROUPLV.COM

10100 W. CHARLESTON BLVD.  
LAS VEGAS, NV 89135

First Floor — 35,207 R.S.F.



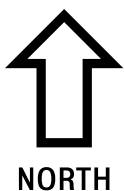
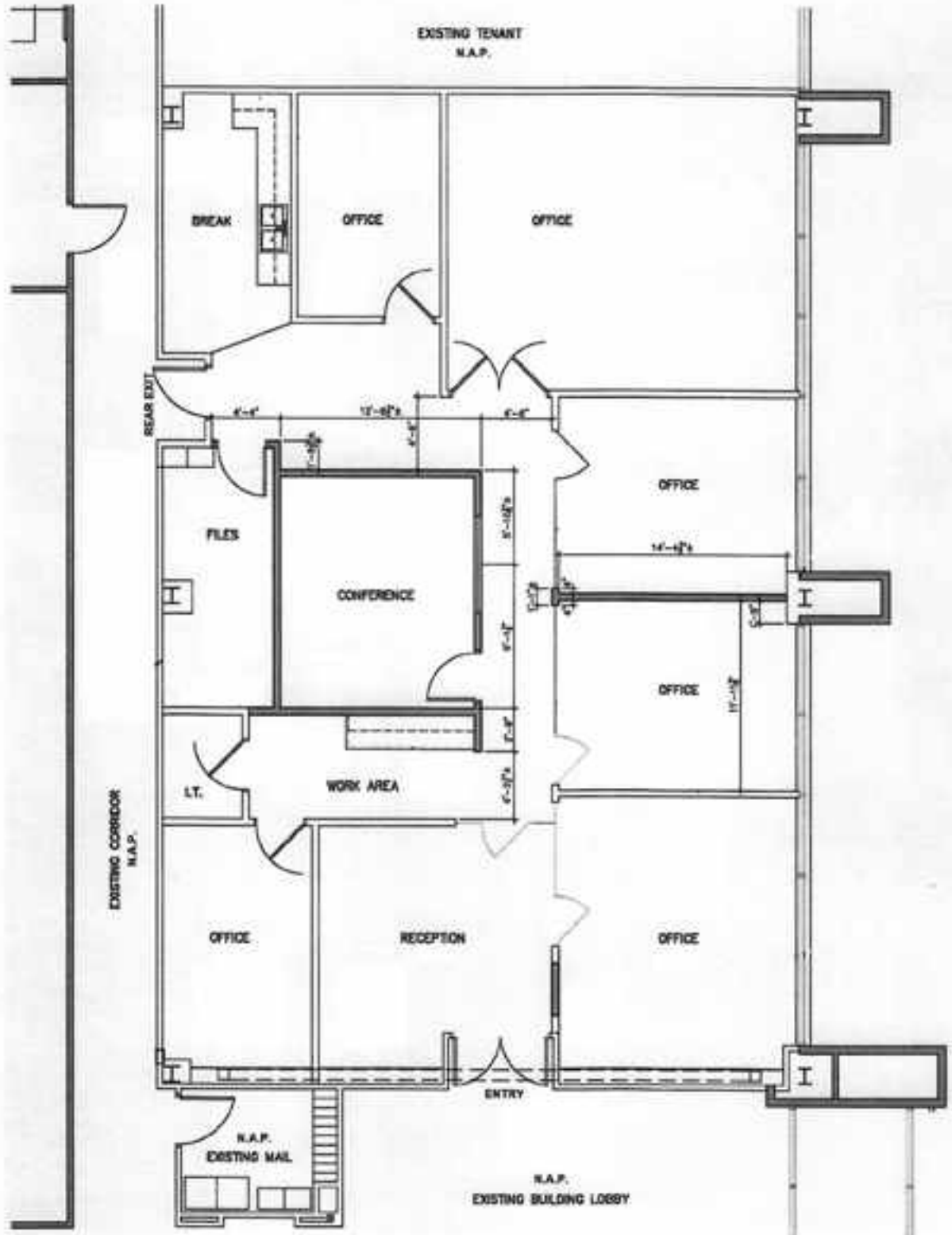
REVISED 8.12.2020

# HUGHES PLAZA WEST

RAMGROUPLV.COM

10100 W. CHARLESTON BLVD.  
LAS VEGAS, NV 89135

Suite 100 — 2,985 R.S.F.



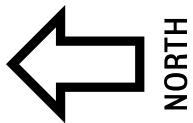
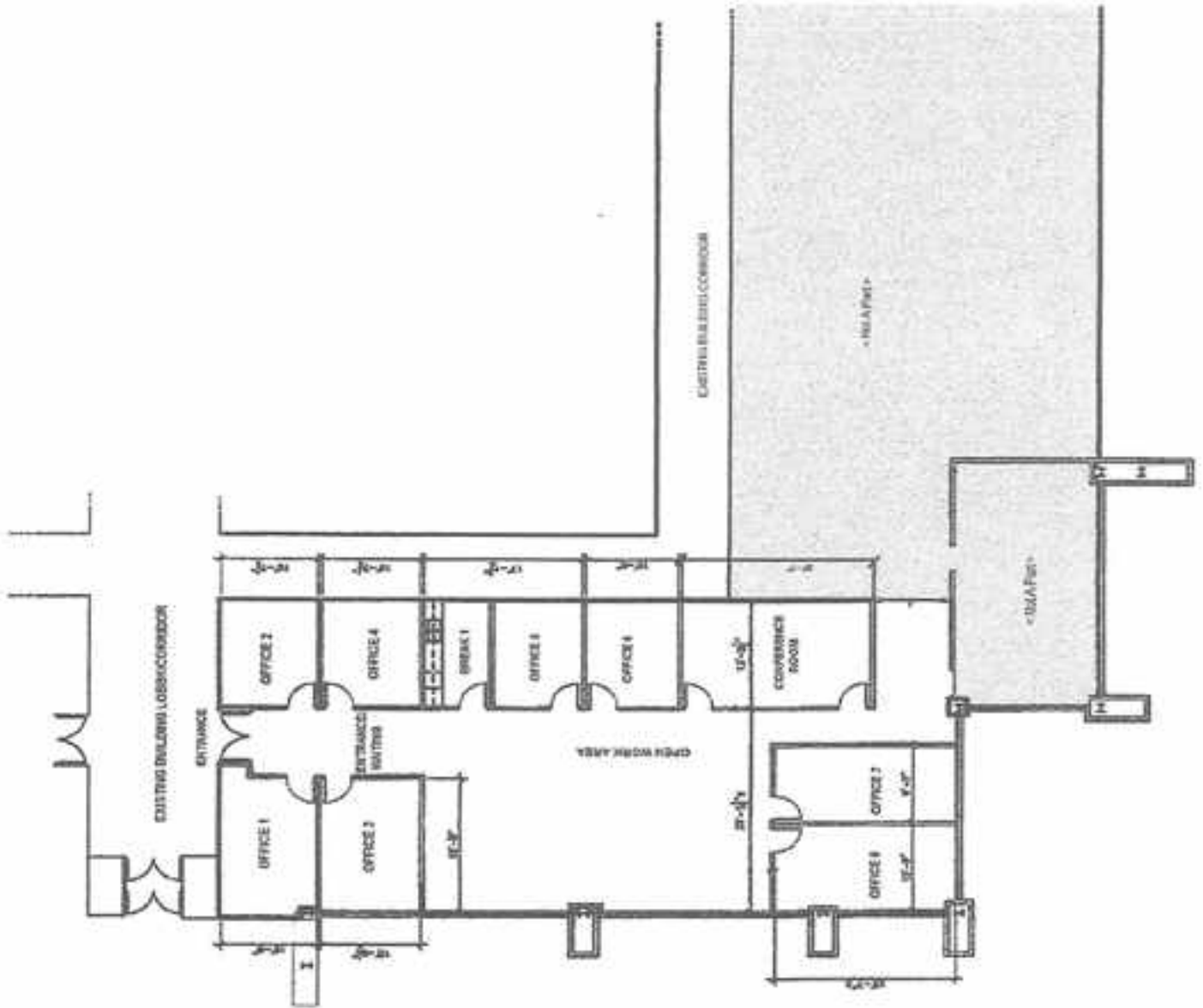
REVISED 8.12.2020

# HUGHES PLAZA WEST

RAMGROUPLV.COM

10100 W. CHARLESTON BLVD.  
LAS VEGAS, NV 89135

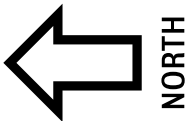
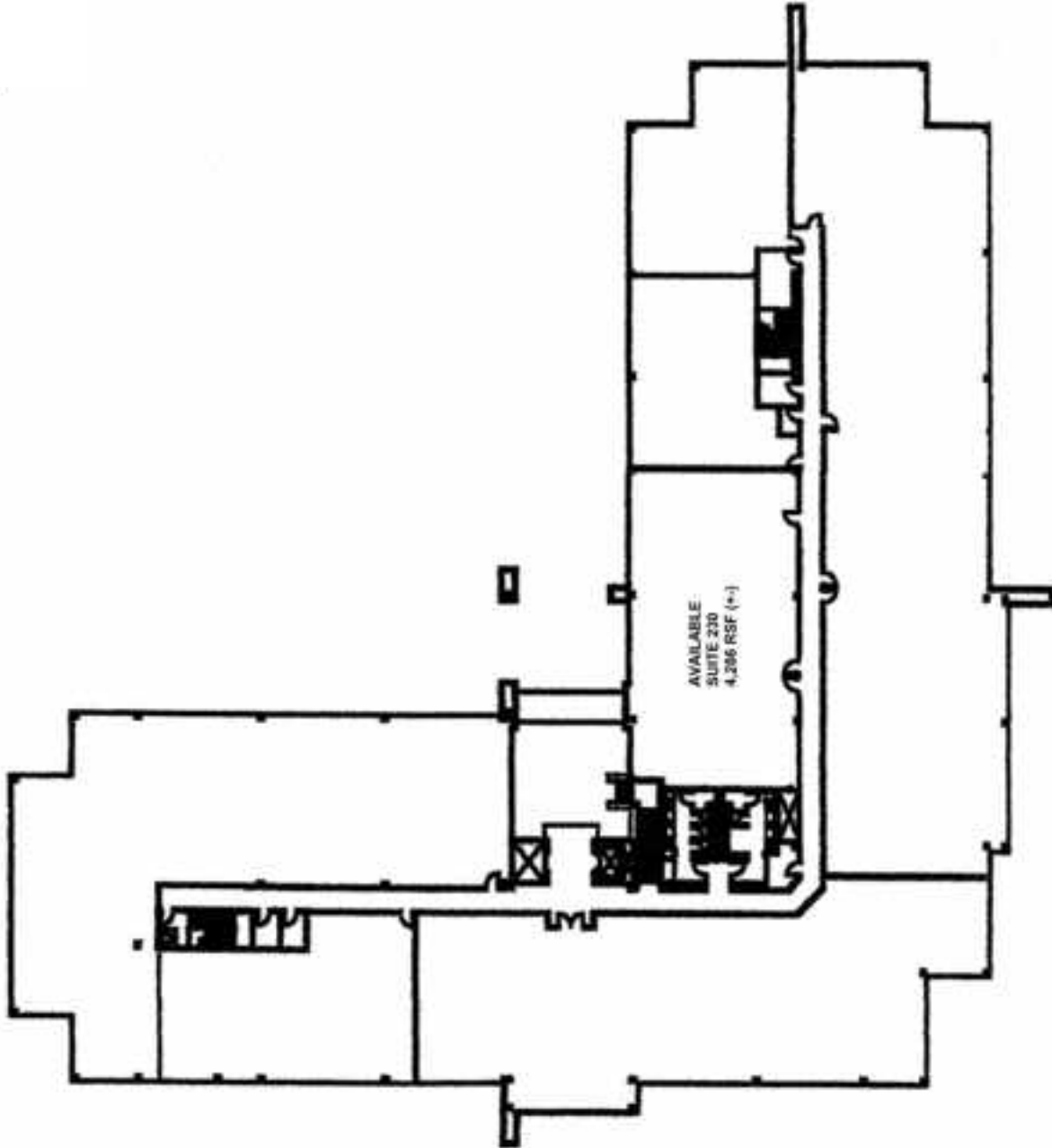
Suite 140 — 3,922 R.S.F.



# HUGHES PLAZA WEST

10100 W. CHARLESTON BLVD.  
LAS VEGAS, NV 89135

## Second Floor

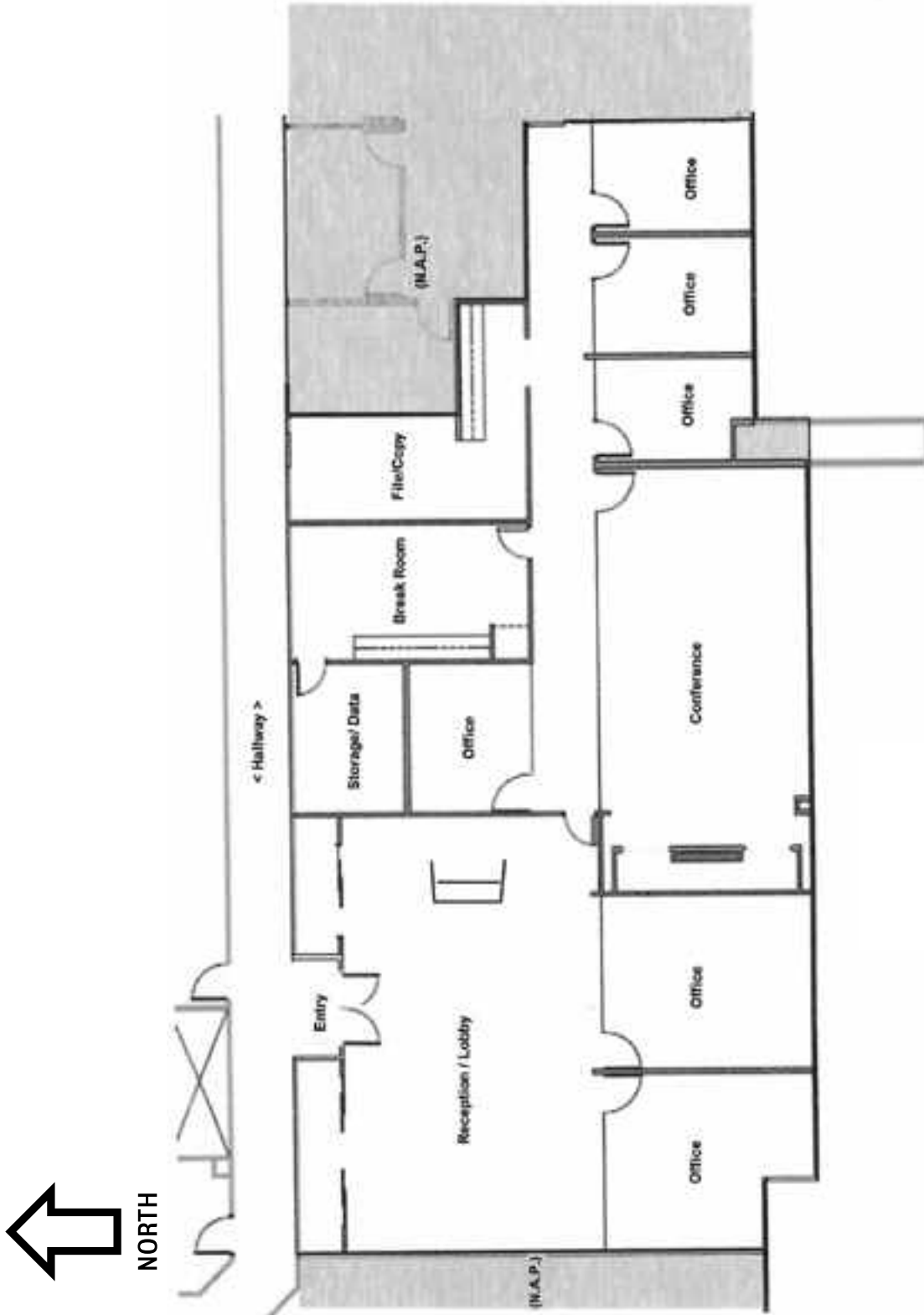




# HUGHES PLAZA WEST

10100 W. CHARLESTON BLVD.  
LAS VEGAS, NV 89135

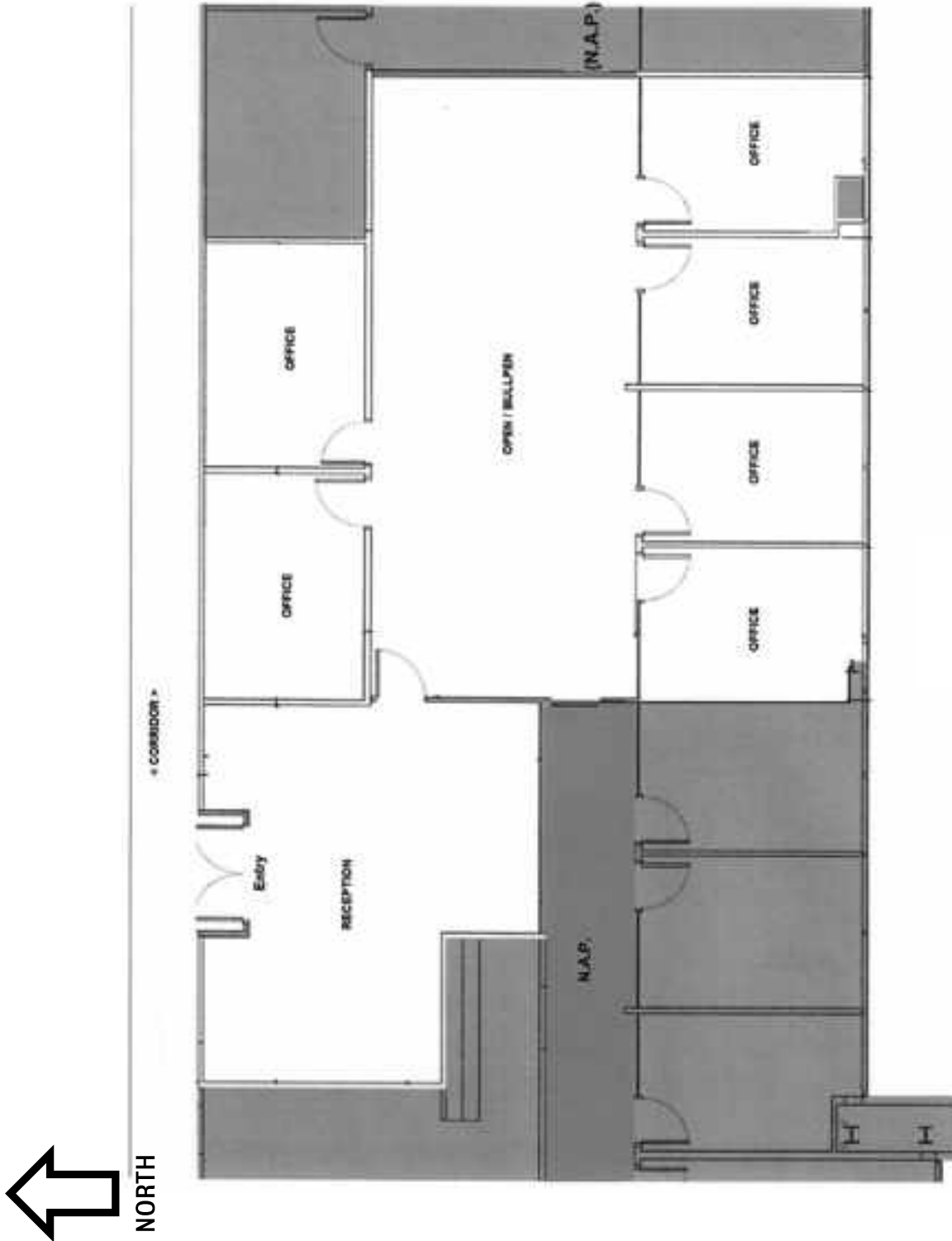
Suite 210 — 4,091 R.S.F.



# HUGHES PLAZA WEST

10100 W. CHARLESTON BLVD.  
LAS VEGAS, NV 89135

Suite 212 — 2,208 R.S.F.

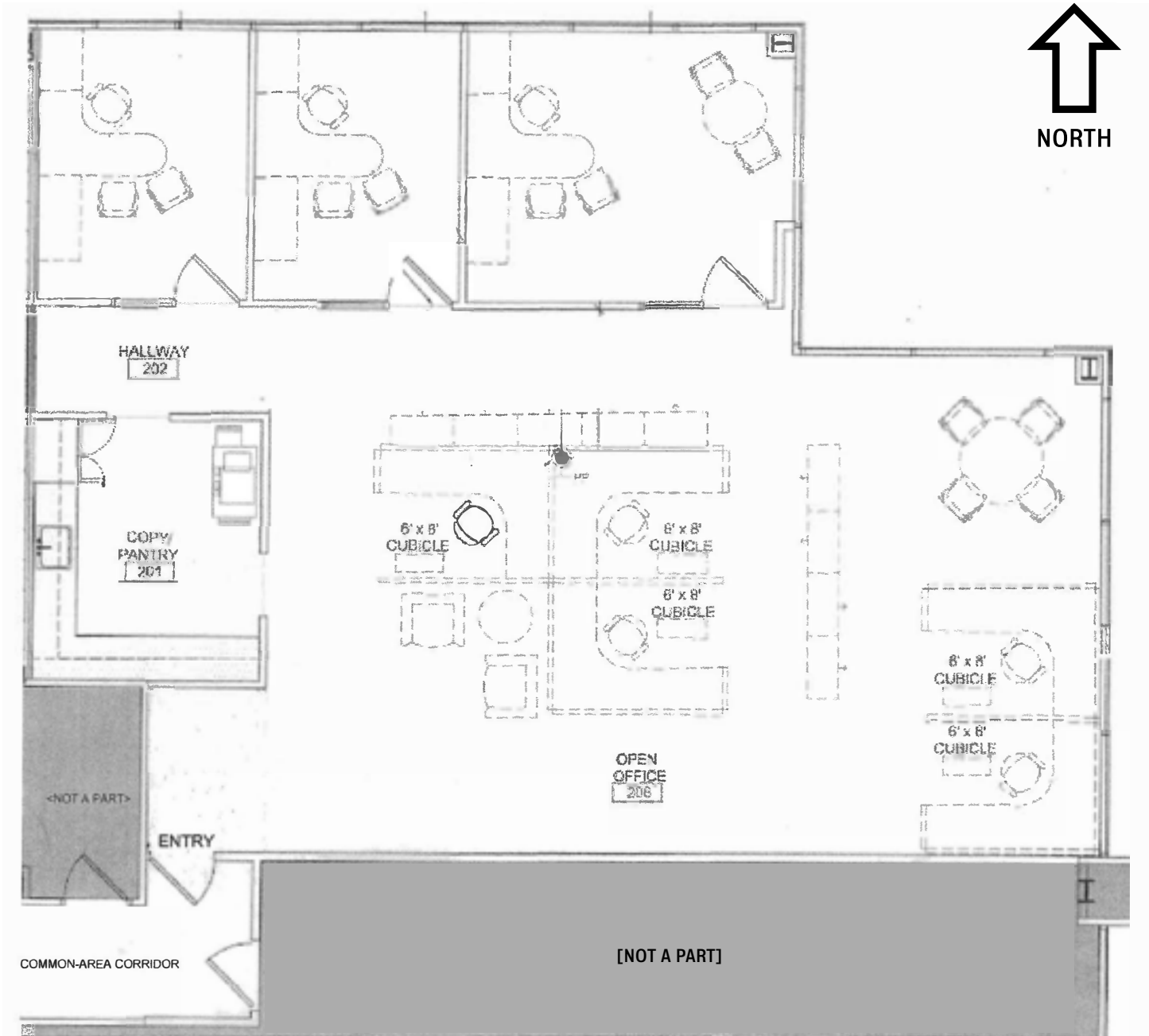


# HUGHES PLAZA WEST

RAMGROUPLYV.COM

10100 W. CHARLESTON BLVD.  
LAS VEGAS, NV 89135

Suite 215 — 2,098 R.S.F.



FOR REFERENCE—DO NOT SCALE