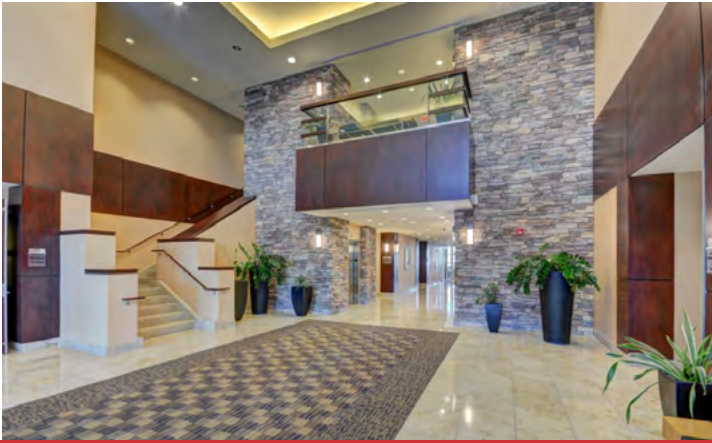


HUGHES PLAZA WEST

10100 West Charleston Boulevard
Las Vegas, Nevada 89135



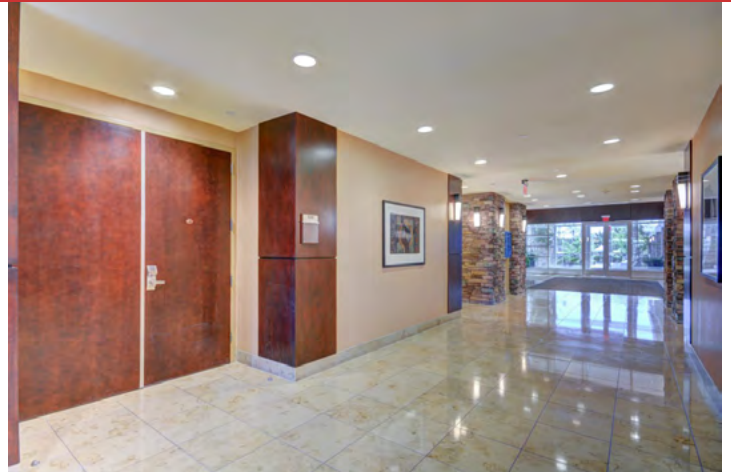
SPACE AVAILABLE

Hughes Plaza West is fully leased with no space available currently.

QUICK LOOK

Parcel number: 137-36-811-018
Building Sq. Ft.: 71,546 (+/-)
Land Sq. Ft.: 174,240 (+/-)
Land Acres: 4.000 (+/-)

Recently renovated.
Upscale lobby, Stone floor
Covered parking available.



DETAILS

A premium, upscale facility located at one of Summerlin's busiest intersections, Hughes Plaza West is a Class A office building with state of the art amenities. The building interior includes quality stone floors throughout; sleek woodwork; and an airy, upscale lobby with modern design details. Outside, the prestigious Hughes Plaza West boasts sophisticated architecture; lush, mature landscaping; ample, convenient parking; and covered parking options.

At 71,546 sq. ft. (+/-) with two stories, the building is home to established tenants that include Vintner Grill, Academy Mortgage, House Advantage, Sierra Pacific, Synergy Sotheby's International Realty, Tiffany & Bosco P.A., Buckley Wealth Management, Wesley Financial Group, and Santoro Whitmire, among others.



FOR LEASING INFORMATION, PLEASE CONTACT

JEFF SUSA
702.363.4788
EZME@COX.NET

DANIEL LOERA JR.
702.363.4788
EZDL@HOTMAIL.COM

HUGHES PLAZA WEST

10100 West Charleston Boulevard
Las Vegas, Nevada 89135

The information contained herein has been carefully compiled from sources we consider reliable. We cannot guarantee the completeness or accuracy of the information. However, we believe the information to be correct as of the date of publication.



FOR LEASING INFORMATION, PLEASE CONTACT

JEFF SUSA
702.363.4788
EZME@COX.NET

DANIEL LOERA JR.
702.363.4788
EZDL@HOTMAIL.COM

HUGHES PLAZA WEST

10100 West Charleston Boulevard
Las Vegas, Nevada 89135

The information contained herein has been carefully compiled from sources we consider reliable. We cannot guarantee the completeness or accuracy of the information. However, we believe the information to be correct as of the date of publication.